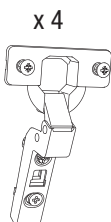


x 8



x 8



x 4



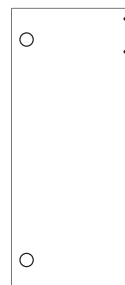
x 4



base



catene x 2



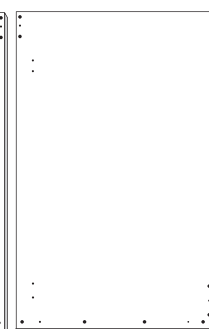
anta sinistra



anta destra



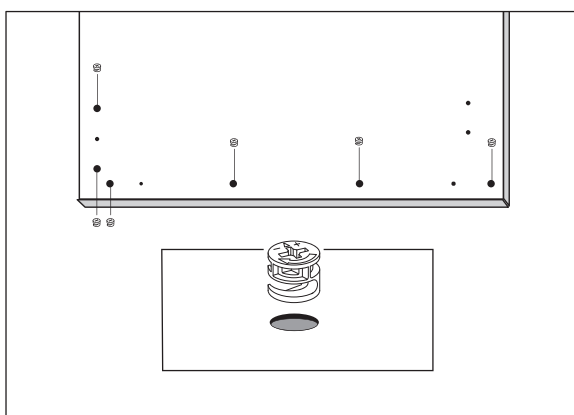
fianco sinistro



fianco destro

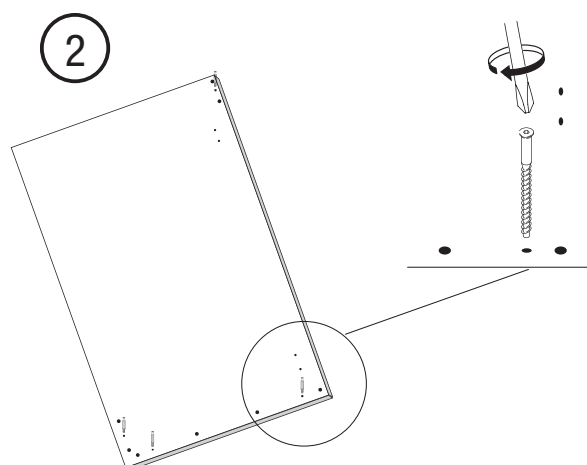
## FASE DI MONTAGGIO

1

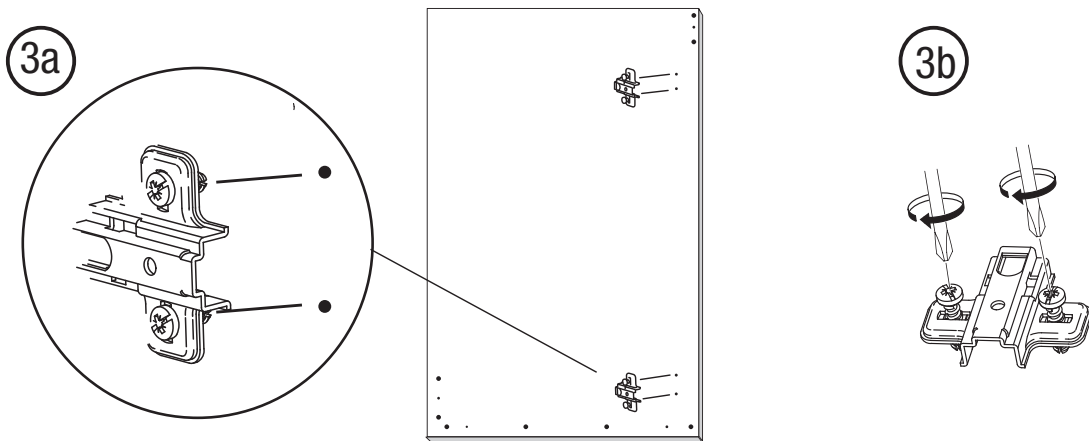


Posizionare le otto bussole nei fori diametro 15 mm (4 nella base e 2 in ogni catena). La bussola deve essere posizionata con la freccia stampata diretta verso l'esterno in direzione del foro passante posto sul bordo.

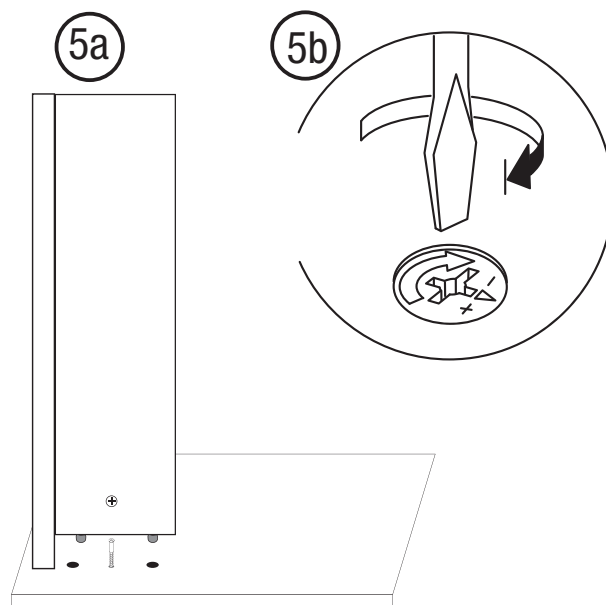
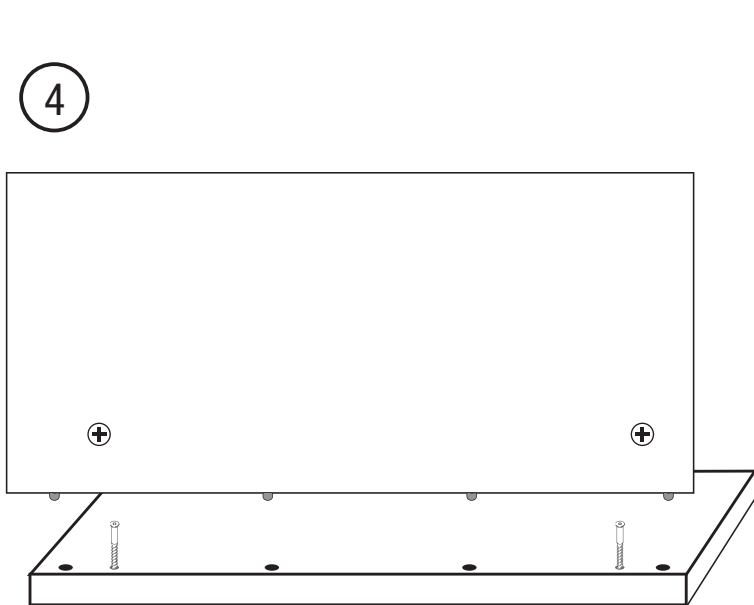
2



Avvitare gli 8 tiranti, 4 per ciascun fianco, nei fori da 6 mm lungo il perimetro esterno

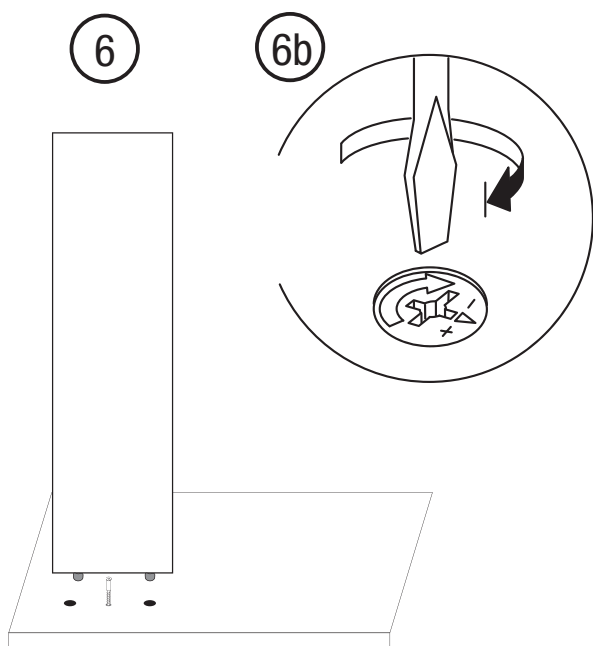


3a) Posizionare le basette sui fori del fianco con la vite centrale verso l'interno del mobile ed avvitare (3b)

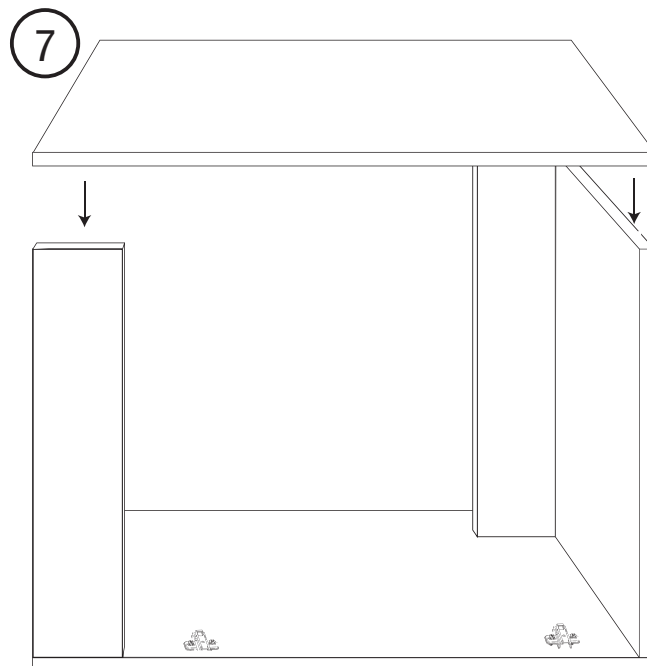


5) Incastrare la base e la catena posteriore con i tiranti allineati alle bussole ed i prigionieri di legno ai fori.

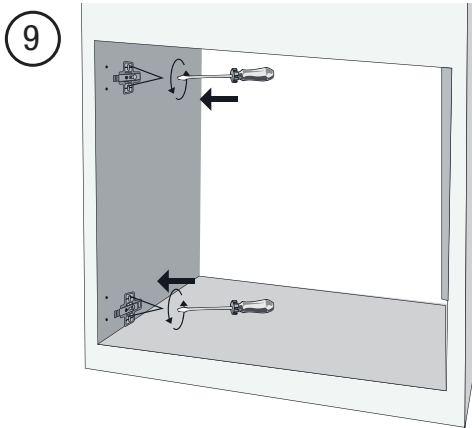
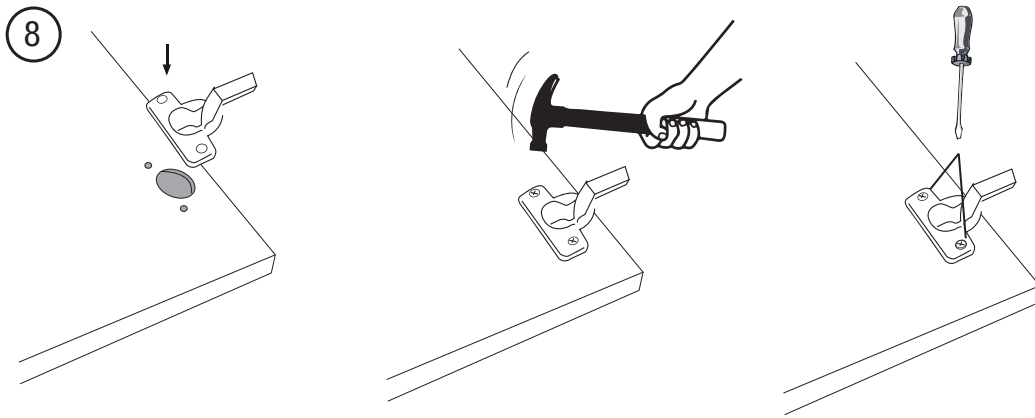
5b) Serrare con un cacciavite a stella la bussola fino a fine corsa.



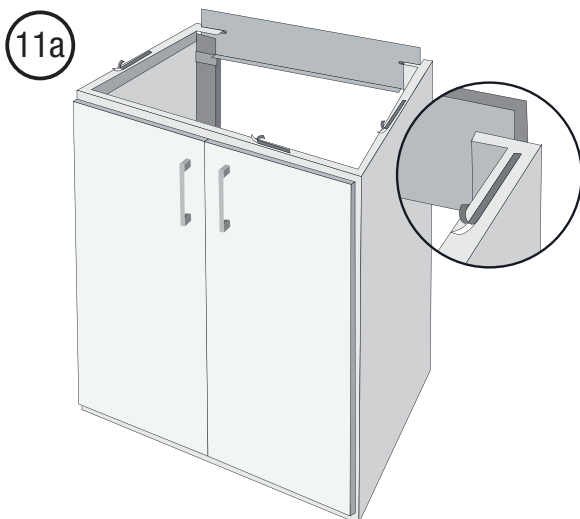
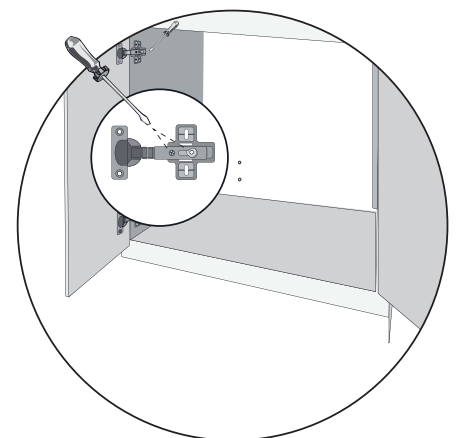
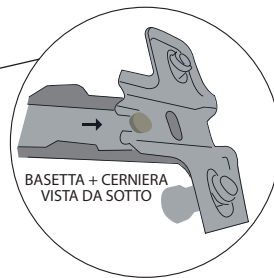
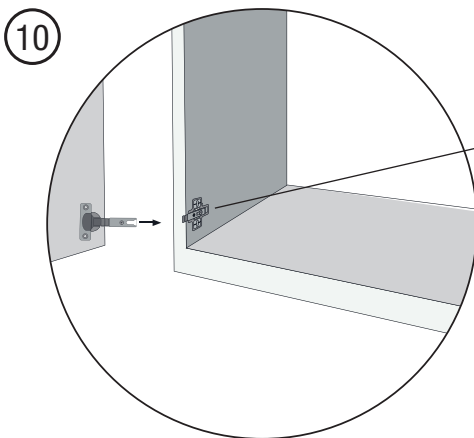
6) Stessa operazione con la catena frontale assicurandosi che sia allineata al bordo esterno superiore del mobile poi serrare la bussola fino a fine corsa (6b)



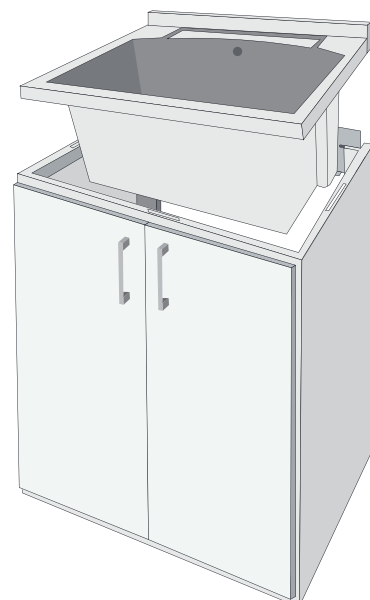
Dopo avere assemblato e serrato la base, la catena posteriore e quella anteriore posizionate il secondo fianco stando attenti ad incastrare tiranti e bussole e prigionieri con fori.



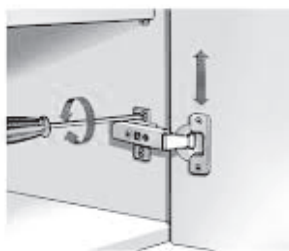
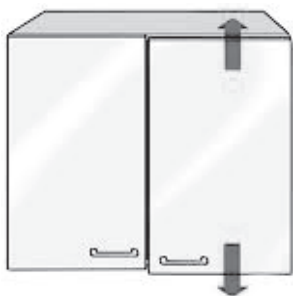
**PER IL MODELLO 45X50  
MONTARE LE BASETTE  
SUL FIANCO DESTRO  
DEL MOBILE**



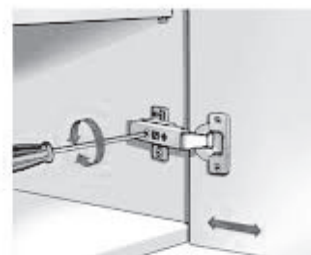
**11b** Mantenere una leggera pressione costante per circa 30 secondi per favorire l'adesione del biadesivo. Prima dell'utilizzo lasciare trascorrere 12/24 h



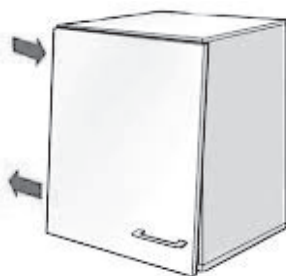
### REGOLAZIONE ALTEZZA ANTA



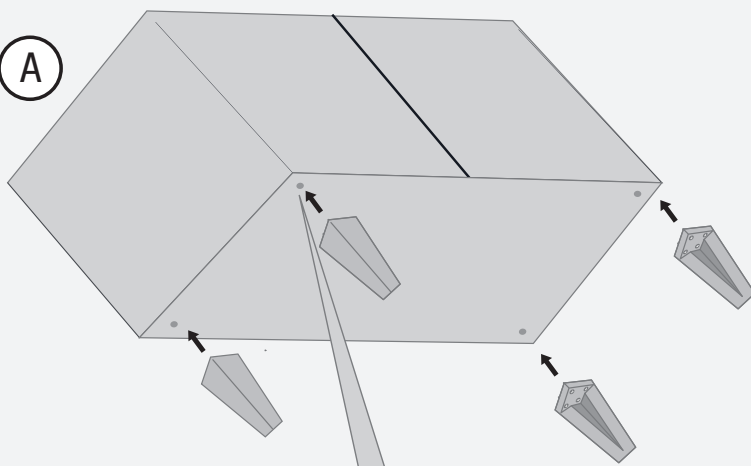
### REGOLAZIONE PROFONDITÀ



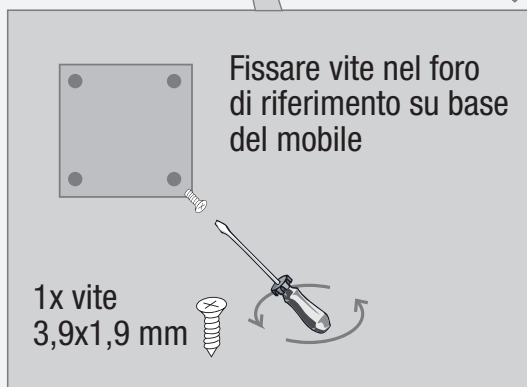
### REGOLAZIONE SORMONTO



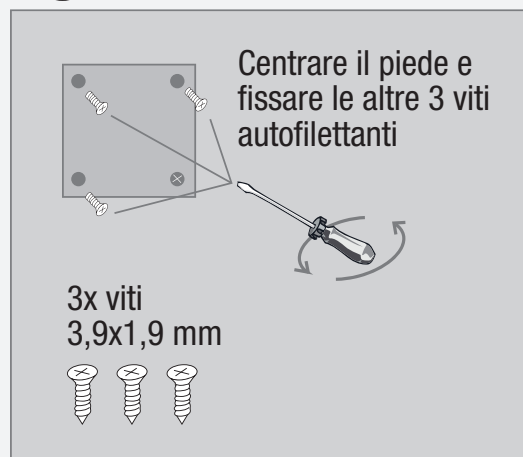
A



B



C



Ripetere l'operazione per tutti i 4 piedi

### STAMPAGGIO MATERIALI PLASTICI

TRIOPLAST srl - 53049 Torrita di Siena (SI) - Loc. Capannone - Italy  
Tel. +39.0577.624108 Fax +39.0577.623284  
www.trioplast.it info@trioplast.it

### TAGLIANDO DI CONTROLLO

OPERATORE

DATA